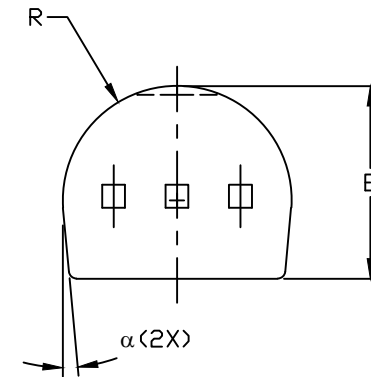
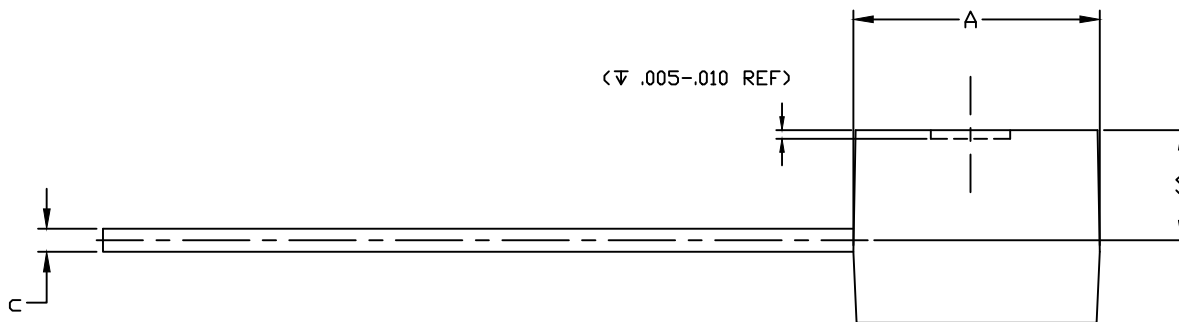


SYMBOL	INCHES		MILLIMETERS	
	MIN	MAX	MIN	MAX
A	.170	.195	4.32	4.95
b	.016	.022	0.41	0.55
c	.014	.020	0.36	0.51
D	.175	.195	4.45	4.95
E	.130	.155	3.30	3.94
e	.095	.105	2.42	2.66
e1	.045	.055	1.14	1.40
L	.500	.610	12.70	15.49
R	.085	.095	2.16	2.41
s	.080	.115	2.04	2.92
$\alpha$	4°	6°	4°	6°
PKG CODE	Q3-1			



**NOTES:**

1. ALL DIMENSIONS ARE IN INCHES UNLESS OTHERWISE SPECIFIED.
2. MATERIAL MUST COMPLY WITH BANNED AND RESTRICTED SUBSTANCES SPEC # 10-0131.
3. PACKAGE OUTLINE EXCLUSIVE OF ANY MOLD FLASHES DIMENSION.
4. PACKAGE OUTLINE EXCLUSIVE OF BURR DIMENSION.
5. MEETS JEDEC T0-226 AA.
6. ALL DIMENSIONS APPLY TO BOTH LEADED (-) AND PbFREE (+) PKG. CODES.

-DRAWING NOT TO SCALE-

<b>maxim integrated</b> ™			
TITLE: PACKAGE OUTLINE, 3-PIN TO-92			
APPROVAL	DOCUMENT CONTROL NO. 21-0248	REV. E	1/1